

ANSI CLASS STRAIN INSULATOR

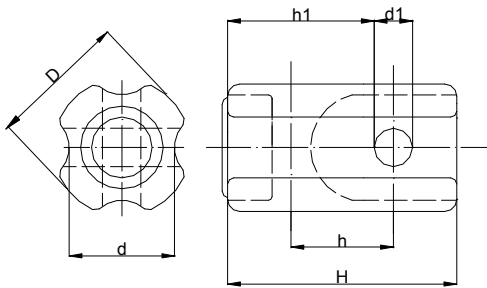


Fig 1

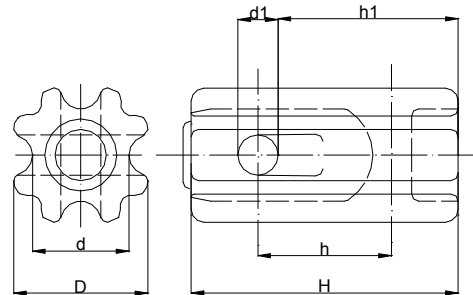


Fig 2

STANDARD TECHNICAL CHARACTERISTICS

| Fig. No. | | 1 | | | 2 |
|------------------------------|--------------------|------------|------------|------------|------------|
| ANSI Class | | 54-1 | 54-2 | 54-3 | 54-4 |
| Nominal System Voltage/KV | | 2.2 | 4.4 | 6.6 | 6.6 |
| Main Dimensions/in | H | 3-1/2 | 4-1/4 | 5-1/2 | 6-3/4 |
| | h | 1-3/4 | 2-1/4 | 3-1/8 | 2-5/8 |
| | h1 | 2-1/2Max | 3 Max | 4-1/16 | 4-1/2 |
| | D | 5/8 | 2-7/8 | 3-3/8 | 3-1/2 |
| | d | 1-3/4 | 2-1/8 | 2-3/8 | 2-3/8 |
| | d1 | 2-1/2 | 7/8 | 1 | 1 |
| Tension Strength/lb(KN) | | 10,000(44) | 12,000(53) | 20,000(89) | 20,000(89) |
| Average Flashover Voltage/KV | Low-frequency(Dry) | 25 | 30 | 35 | 40 |
| | Low-frequency(Wet) | 12 | 15 | 18 | 23 |
| Leakage Distance/in(mm) | | 1-5/8(41) | 1-7/8(48) | 2-1/4(57) | 3(76) |
| Net Weight/lb(kg) | | 0.76(0.35) | 1.5(0.68) | 2.9(1.3) | 4.1(1.9) |

Note: In tension test, two loops of suitable wire ropes are used and glaze chips or partial porcelain cracks should be allowed.

Standard Specification: ANSI C29.4