

ANSI CLASS SPOOL INSULATOR

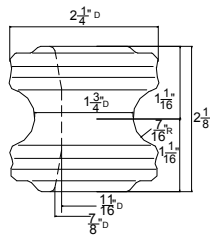


Fig 1

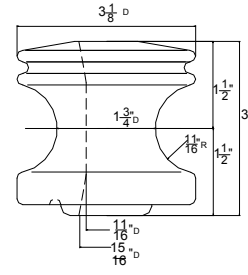


Fig 2

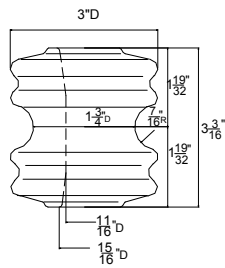


Fig 3

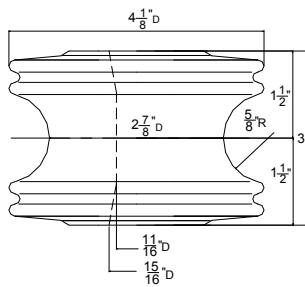


Fig 4

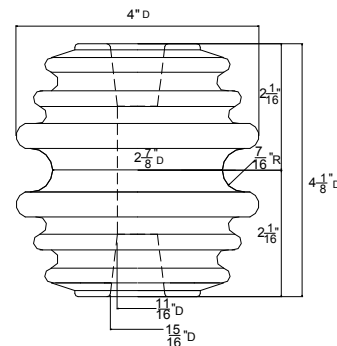


Fig 5

STANDARD TECHNICAL CHARACTERISTICS

Fig No.	1		2		3		4		5		
ANSI Class	53-1		53-2		53-3		53-4		53-5		
Transverse Strength/lb(KN)	2000(89)		3000(13.3)		4000(17.8)		4500(20)		6000(26.7)		
Average	Low-Freq. Dry/KV		20		25		25		35		
Flashover Voltage	Low-Freq. Wet/KV	Vertical	8		12		12		18		
		Horizontal	10		15		15		25		
Net Weight/lb(kg)		0.48(0.22)		1.2(0.55)		1.2(0.55)		2.2(1.0)		2.6(1.2)	

Notes: 1. In mechanical test, glaze chips or partial porcelain cracks should be allowed.

2. Hardware for these insulators are available upon request.

Standard Specification: ANSI C29.3