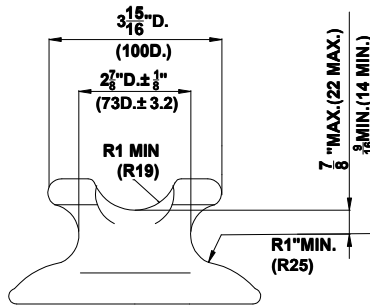


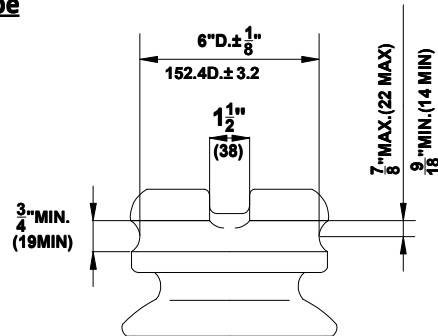
ANSI CLASS LINE POST INSULATOR (ANSI 57 SERIES)

[Details of Top and Base]

Tie-Top Type

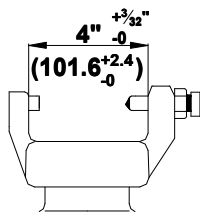


F-neck
Top & side wire groove with diameter 1-15/16 inch (49.2mm)

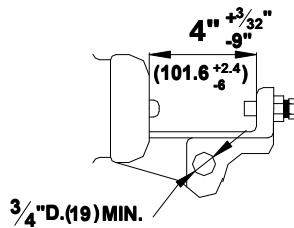


N-neck
Top & side wire groove with diameter 1-7/16 inch (36.5mm)

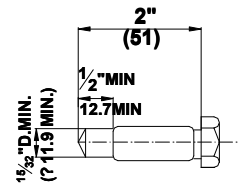
Vertical-Clamp



**Clamp-Top Type
Horizontal-Clamp**

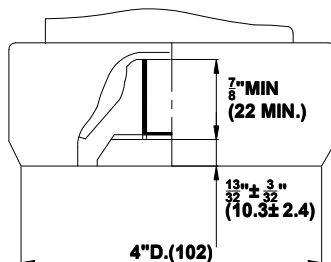


Trunnion Bolt



Base recess

**3/4-10UNC
(PD0.7077"-0.7000")**



**7/8-9UNC
(PD0.8260"-0.8178")**

